

■ Veldzicht 26
■ 3454 PW De Meern

T +31 (0)30 65 85 125
F +31 (0)30 66 20 758

■ info@alcadis.nl
■ www.alcadis.nl



Testrapport

EnGenius

M36 & M2000

Datum: 29-06-2010
Versie: 1.0

■ Veldzicht 26
■ 3454 PW De Meern

T +31 (0)30 65 85 125
F +31 (0)30 66 20 758

■ info@alcadis.nl
■ www.alcadis.nl



Inhoud

Inhoud	2
Doel van de test.....	3
Test opstelling	4
Metingen	5
Conclusie.....	9

■ Veldzicht 26
■ 3454 PW De Meern

T +31 (0)30 65 85 125
F +31 (0)30 66 20 758

■ info@alcadis.nl
■ www.alcadis.nl



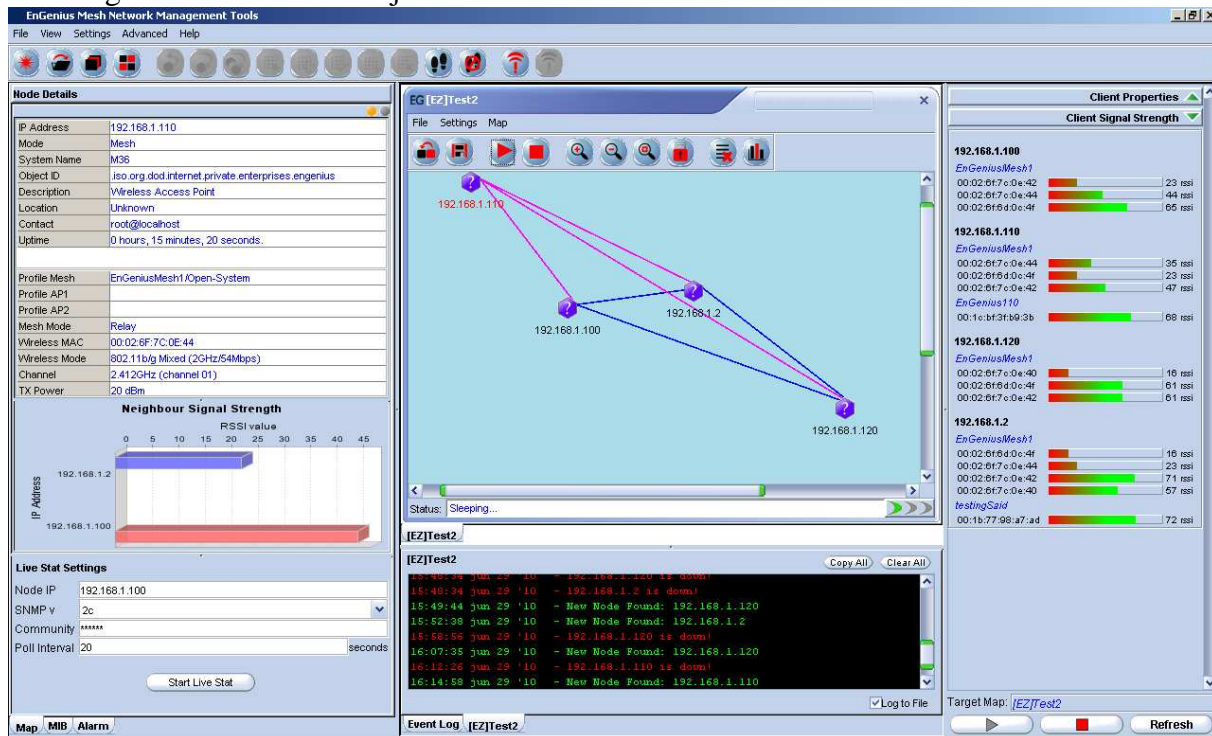
Doel van de test.

De M36 en M2000 is getest op algehele werking, configuratie en Mesh vorming.

Tijdens de test is er met name gelet op de doorvoer snelheid. Zowel over het normale AP als via een aantal hops waardoor er een draadloze repeating plaats vond.

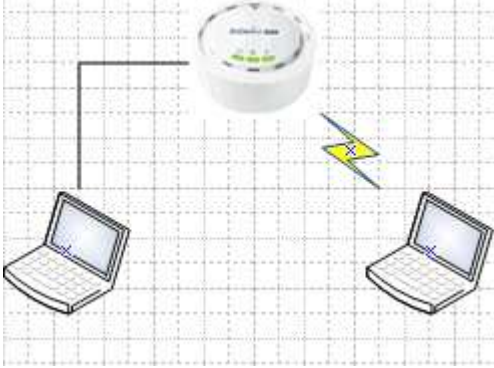
Test opstelling

De opstelling welke gemaakt is:
AP1 ongeveer 20 meter verwijderd van AP2 en AP3.
AP2 en AP3 staan 5 meter uit elkaar
AP4 ongeveer 15 meter verwijderd van AP2 en AP3



Metingen

In de eerste opstelling is 1 notebook bedraad gekoppeld aan de gateway. De tweede notebook is draadloos gekoppeld met de gateway.



UDP: 21.5 Mbps

```

c:\Opracht>netsh interface tcpip show interface
965: 192.168.1.30->192.168.1.12 90882-rx 15-dr 0=00 0=rp 95-rx in 50.4ms 22.2mbps 21.5 32.9 22.4 14.8 9.6 1.6 0.1
966: 192.168.1.30->192.168.1.12 90177-rx 15-dr 0=00 0=rp 95-rx in 51.3ms 21.8mbps 21.5 32.9 22.4 14.8 9.6 1.6 0.1
967: 192.168.1.30->192.168.1.12 90284-rx 15-dr 0=00 0=rp 107-rx in 50.1ms 25.1mbps 21.5 32.9 22.4 14.8 9.6 1.6 0.1
968: 192.168.1.30->192.168.1.12 90386-rx 15-dr 0=00 0=rp 102-rx in 50.4ms 23.8mbps 21.5 32.9 22.4 14.8 9.6 1.6 0.1
969: 192.168.1.30->192.168.1.12 90484-rx 15-dr 0=00 0=rp 98-rx in 50.3ms 22.9mbps 21.5 32.9 22.4 14.8 9.6 1.6 0.1
970: 192.168.1.30->192.168.1.12 90583-rx 15-dr 0=00 0=rp 99-rx in 53.8ms 21.7mbps 21.5 32.9 22.4 15.0 9.6 1.6 0.1
971: 192.168.1.30->192.168.1.12 90681-rx 15-dr 0=00 0=rp 98-rx in 50.1ms 23.0mbps 21.5 32.9 22.4 15.0 9.6 1.6 0.1
972: 192.168.1.30->192.168.1.12 90797-rx 15-dr 0=00 0=rp 114-rx in 50.0ms 27.3mbps 21.5 32.9 22.4 14.8 9.6 1.6 0.1
973: 192.168.1.30->192.168.1.12 90895-rx 15-dr 0=00 0=rp 98-rx in 51.6ms 22.4mbps 21.5 32.9 22.4 15.0 9.6 1.6 0.1
974: 192.168.1.30->192.168.1.12 91004-rx 15-dr 0=00 0=rp 109-rx in 50.4ms 25.5mbps 21.5 32.9 22.4 15.0 9.6 1.6 0.1
975: 192.168.1.30->192.168.1.12 91096-rx 15-dr 0=00 0=rp 92-rx in 50.5ms 21.3mbps 21.5 32.9 22.4 15.0 9.6 1.6 0.1
976: 192.168.1.30->192.168.1.12 91210-rx 15-dr 0=00 0=rp 114-rx in 53.7ms 25.0mbps 21.5 32.9 22.4 15.0 9.6 1.6 0.1
977: 192.168.1.30->192.168.1.12 91260-rx 15-dr 0=00 0=rp 50-rx in 54.7ms 10.8mbps 21.5 32.9 22.4 14.8 9.6 1.6 0.1
978: 192.168.1.30->192.168.1.12 91355-rx 15-dr 0=00 0=rp 95-rx in 50.2ms 22.3mbps 21.5 32.9 22.4 14.8 9.6 1.6 0.1
979: 192.168.1.30->192.168.1.12 91453-rx 15-dr 0=00 0=rp 98-rx in 50.7ms 22.7mbps 21.5 32.9 22.4 14.8 9.6 1.6 0.1
980: 192.168.1.30->192.168.1.12 91528-rx 15-dr 0=00 0=rp 75-rx in 52.2ms 16.9mbps 21.5 32.9 22.4 15.0 9.6 1.6 0.1
981: 192.168.1.30->192.168.1.12 91652-rx 15-dr 0=00 0=rp 124-rx in 51.0ms 28.6mbps 21.5 32.9 22.4 15.0 9.6 1.6 0.1
982: 192.168.1.30->192.168.1.12 91739-rx 15-dr 0=00 0=rp 87-rx in 50.2ms 20.5mbps 21.5 32.9 22.4 15.0 9.6 1.6 0.1
983: 192.168.1.30->192.168.1.12 91845-rx 15-dr 0=00 0=rp 106-rx in 54.5ms 22.9mbps 21.5 32.9 22.4 15.0 9.6 1.6 0.1
984: 192.168.1.30->192.168.1.12 91894-rx 15-dr 0=00 0=rp 49-rx in 50.3ms 11.5mbps 21.5 32.9 22.4 14.8 9.6 1.6 0.1
985: 192.168.1.30->192.168.1.12 91908-rx 15-dr 0=00 0=rp 14-rx in 63.7ms 2.6mbps 21.5 32.9 22.4 14.8 9.6 1.6 0.1
986: 192.168.1.30->192.168.1.12 92017-rx 15-dr 0=00 0=rp 103-rx in 50.3ms 24.1mbps 21.5 32.9 22.4 14.8 9.6 1.6 0.1
987: 192.168.1.30->192.168.1.12 92082-rx 15-dr 0=00 0=rp 71-rx in 50.3ms 16.6mbps 21.5 32.9 22.4 14.8 9.6 1.6 0.1
988: 192.168.1.30->192.168.1.12 92189-rx 15-dr 0=00 0=rp 107-rx in 50.6ms 24.9mbps 21.5 32.9 22.4 14.8 9.6 1.6 0.1
989: 192.168.1.30->192.168.1.12 92286-rx 15-dr 0=00 0=rp 92-rx in 50.2ms 22.8mbps 21.5 32.9 22.4 14.8 9.6 1.6 0.1
990: 192.168.1.30->192.168.1.12 92389-rx 15-dr 0=00 0=rp 103-rx in 54.2ms 22.4mbps 21.5 32.9 22.4 14.8 9.6 1.6 0.1
991: 192.168.1.30->192.168.1.12 92497-rx 15-dr 0=00 0=rp 108-rx in 50.1ms 25.4mbps 21.5 32.9 22.4 14.8 9.6 1.6 0.1
992: 192.168.1.30->192.168.1.12 92587-rx 15-dr 0=00 0=rp 90-rx in 57.3ms 18.5mbps 21.5 32.9 22.4 14.8 9.6 1.6 0.1
993: 192.168.1.30->192.168.1.12 92674-rx 15-dr 0=00 0=rp 92-rx in 50.3ms 22.6mbps 21.5 32.9 22.4 14.8 9.6 1.6 0.1
994: 192.168.1.30->192.168.1.12 92813-rx 15-dr 0=00 0=rp 99-rx in 51.7ms 22.6mbps 21.5 32.9 22.4 14.8 9.6 1.6 0.1
995: 192.168.1.30->192.168.1.12 92896-rx 15-dr 0=00 0=rp 83-rx in 50.3ms 19.4mbps 21.5 32.9 22.4 14.8 9.6 1.6 0.1
996: 192.168.1.30->192.168.1.12 92963-rx 15-dr 0=00 0=rp 62-rx in 51.5ms 15.8mbps 21.5 32.9 22.4 14.8 9.6 1.6 0.1
997: 192.168.1.30->192.168.1.12 93060-rx 15-dr 0=00 0=rp 95-rx in 52.3ms 21.4mbps 21.5 32.9 22.4 14.8 9.6 1.6 0.1
998: 192.168.1.30->192.168.1.12 93170-rx 15-dr 0=00 0=rp 110-rx in 50.4ms 25.7mbps 21.5 32.9 22.4 14.8 9.6 1.6 0.1
999: 192.168.1.30->192.168.1.12 93263-rx 15-dr 0=00 0=rp 93-rx in 50.4ms 21.7mbps 21.5 32.9 22.4 14.8 9.6 1.6 0.1
+
Test apparently complete
count--
complete
C:\Documents and Settings\Administrator>
    
```

TCP: 15.8 Mbps

```

c:\Opracht>netsh interface tcpip show interface
965: 192.168.1.30->192.168.1.12 67164-rx 0=dr 0=00 0=rp 73-rx in 51.8ms 16.6mbps 15.8 27.9 16.5 11.0 5.1 0.9 0.0
966: 192.168.1.30->192.168.1.12 67219-rx 0=dr 0=00 0=rp 55-rx in 90.7ms 7.1mbps 15.8 27.9 16.5 11.0 5.1 0.9 0.0
967: 192.168.1.30->192.168.1.12 67288-rx 0=dr 0=00 0=rp 69-rx in 50.5ms 16.1mbps 15.8 27.9 16.5 11.0 5.1 0.9 0.0
968: 192.168.1.30->192.168.1.12 67368-rx 0=dr 0=00 0=rp 80-rx in 50.8ms 18.6mbps 15.8 27.9 16.5 11.0 5.1 0.9 0.0
969: 192.168.1.30->192.168.1.12 67438-rx 0=dr 0=00 0=rp 70-rx in 50.6ms 16.3mbps 15.8 27.9 16.5 11.0 5.1 0.9 0.0
970: 192.168.1.30->192.168.1.12 67493-rx 0=dr 0=00 0=rp 55-rx in 52.7ms 12.3mbps 15.8 27.9 16.5 11.0 5.1 0.9 0.0
971: 192.168.1.30->192.168.1.12 67574-rx 0=dr 0=00 0=rp 81-rx in 50.1ms 19.1mbps 15.8 27.9 16.5 11.0 5.1 0.9 0.0
972: 192.168.1.30->192.168.1.12 67673-rx 0=dr 0=00 0=rp 73-rx in 52.4ms 16.4mbps 15.8 27.9 16.5 11.0 5.1 0.9 0.0
973: 192.168.1.30->192.168.1.12 67723-rx 0=dr 0=00 0=rp 76-rx in 50.6ms 17.7mbps 15.8 27.9 16.5 11.0 5.1 0.9 0.0
974: 192.168.1.30->192.168.1.12 67801-rx 0=dr 0=00 0=rp 78-rx in 50.1ms 18.3mbps 15.8 27.9 16.5 11.0 5.1 0.9 0.0
975: 192.168.1.30->192.168.1.12 67874-rx 0=dr 0=00 0=rp 73-rx in 55.5ms 15.5mbps 15.8 27.9 16.5 11.0 5.1 0.9 0.0
976: 192.168.1.30->192.168.1.12 67970-rx 0=dr 0=00 0=rp 96-rx in 51.1ms 22.1mbps 15.8 27.9 16.5 11.0 5.1 0.9 0.0
977: 192.168.1.30->192.168.1.12 68042-rx 0=dr 0=00 0=rp 72-rx in 50.1ms 16.9mbps 15.8 27.9 16.5 11.0 5.1 0.9 0.0
978: 192.168.1.30->192.168.1.12 68117-rx 0=dr 0=00 0=rp 75-rx in 50.2ms 17.6mbps 15.8 27.9 16.5 11.0 5.1 0.9 0.0
979: 192.168.1.30->192.168.1.12 68184-rx 0=dr 0=00 0=rp 62-rx in 50.2ms 15.7mbps 15.8 27.9 16.5 11.0 5.1 0.9 0.0
980: 192.168.1.30->192.168.1.12 68254-rx 0=dr 0=00 0=rp 70-rx in 51.0ms 16.2mbps 15.8 27.9 16.5 11.1 5.1 0.9 0.0
981: 192.168.1.30->192.168.1.12 68321-rx 0=dr 0=00 0=rp 67-rx in 51.2ms 15.4mbps 15.8 27.9 16.5 11.1 5.1 0.9 0.0
982: 192.168.1.30->192.168.1.12 68394-rx 0=dr 0=00 0=rp 73-rx in 51.7ms 16.4mbps 15.8 27.9 16.5 11.1 5.1 0.9 0.0
983: 192.168.1.30->192.168.1.12 68475-rx 0=dr 0=00 0=rp 81-rx in 50.1ms 19.0mbps 15.8 27.9 16.5 11.1 5.1 0.9 0.0
984: 192.168.1.30->192.168.1.12 68499-rx 0=dr 0=00 0=rp 74-rx in 50.4ms 17.3mbps 15.8 27.9 16.5 11.1 5.1 0.9 0.0
985: 192.168.1.30->192.168.1.12 68627-rx 0=dr 0=00 0=rp 78-rx in 50.0ms 18.4mbps 15.8 27.9 16.5 11.1 5.1 0.9 0.0
986: 192.168.1.30->192.168.1.12 68686-rx 0=dr 0=00 0=rp 59-rx in 50.2ms 13.7mbps 15.8 27.9 16.5 11.1 5.1 0.9 0.0
987: 192.168.1.30->192.168.1.12 68744-rx 0=dr 0=00 0=rp 58-rx in 52.3ms 13.1mbps 15.8 27.9 16.5 11.1 5.1 0.9 0.0
988: 192.168.1.30->192.168.1.12 68805-rx 0=dr 0=00 0=rp 106-rx in 50.8ms 24.6mbps 15.8 27.9 16.5 11.1 5.1 0.9 0.0
989: 192.168.1.30->192.168.1.12 68953-rx 0=dr 0=00 0=rp 105-rx in 57.7ms 21.5mbps 15.8 27.9 16.5 11.1 5.1 0.9 0.0
990: 192.168.1.30->192.168.1.12 69023-rx 0=dr 0=00 0=rp 92-rx in 50.6ms 8.4mbps 15.8 27.9 16.5 11.1 5.1 0.9 0.0
991: 192.168.1.30->192.168.1.12 69112-rx 0=dr 0=00 0=rp 89-rx in 50.1ms 20.9mbps 15.8 27.9 16.5 11.1 5.1 0.9 0.0
992: 192.168.1.30->192.168.1.12 69204-rx 0=dr 0=00 0=rp 92-rx in 52.2ms 20.7mbps 15.8 27.9 16.6 11.1 5.1 0.9 0.0
993: 192.168.1.30->192.168.1.12 69294-rx 0=dr 0=00 0=rp 90-rx in 50.6ms 21.0mbps 15.8 27.9 16.6 11.1 5.1 0.9 0.0
994: 192.168.1.30->192.168.1.12 69370-rx 0=dr 0=00 0=rp 76-rx in 50.3ms 17.0mbps 15.8 27.9 16.6 11.1 5.1 0.9 0.0
995: 192.168.1.30->192.168.1.12 69461-rx 0=dr 0=00 0=rp 91-rx in 50.4ms 21.3mbps 15.8 27.9 16.6 11.1 5.1 0.9 0.0
996: 192.168.1.30->192.168.1.12 69523-rx 0=dr 0=00 0=rp 72-rx in 50.6ms 16.9mbps 15.8 27.9 16.6 11.1 5.1 0.9 0.0
997: 192.168.1.30->192.168.1.12 69614-rx 0=dr 0=00 0=rp 80-rx in 50.4ms 18.5mbps 15.8 27.9 16.6 11.1 5.1 0.9 0.0
998: 192.168.1.30->192.168.1.12 69695-rx 0=dr 0=00 0=rp 81-rx in 50.0ms 19.1mbps 15.8 27.9 16.6 11.1 5.1 0.9 0.0
999: 192.168.1.30->192.168.1.12 69768-rx 0=dr 0=00 0=rp 73-rx in 50.1ms 17.2mbps 15.8 27.9 16.6 11.1 5.1 0.9 0.0
+
Test apparently complete
count--
complete
C:\Documents and Settings\Administrator>
    
```

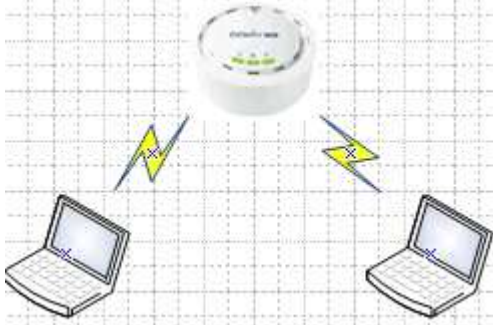
■ Veldzicht 26
■ 3454 PW De Meern

T +31 (0)30 65 85 125
F +31 (0)30 66 20 758

■ info@alcadis.nl
■ www.alcadis.nl



In de tweede opstelling welke gemaakt is zijn beide notebook wireless aangesloten.



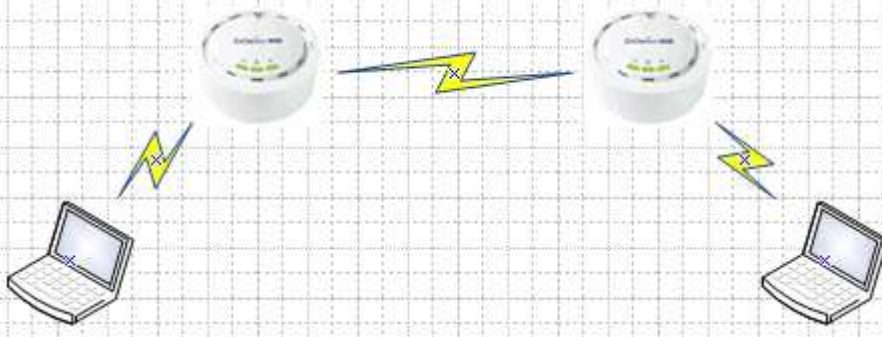
UDP : 4.7 Mbps

```
Odrachtprompt
965: 192.168.1.30->192.168.1.123 23115=rx 186-dr 2=oo 0=rp 21=rx in 136.4ms 1.8mbps 4.7 19.2 3.7 0.6 0.3 0.1 0.1
966: 192.168.1.30->192.168.1.123 23160=rx 186-dr 2=oo 0=rp 45=rx in 50.2ms 10.6mbps 4.7 19.2 3.7 0.6 0.3 0.1 0.1
967: 192.168.1.30->192.168.1.123 23187=rx 186-dr 2=oo 0=rp 27=rx in 51.4ms 6.2mbps 4.7 19.2 3.7 0.6 0.3 0.1 0.1
968: 192.168.1.30->192.168.1.123 23191=rx 186-dr 2=oo 0=rp 4=rx in 51.9ms 0.9mbps 4.7 19.2 3.7 0.6 0.3 0.1 0.1
969: 192.168.1.30->192.168.1.123 23211=rx 186-dr 2=oo 0=rp 20=rx in 116.5ms 2.0mbps 4.7 19.2 3.7 0.6 0.3 0.1 0.1
970: 192.168.1.30->192.168.1.123 23264=rx 186-dr 2=oo 0=rp 53=rx in 51.1ms 12.2mbps 4.7 19.2 3.7 0.6 0.3 0.1 0.1
971: 192.168.1.30->192.168.1.123 23278=rx 186-dr 2=oo 0=rp 14=rx in 64.8ms 2.5mbps 4.7 19.2 3.7 0.6 0.3 0.1 0.1
972: 192.168.1.30->192.168.1.123 23320=rx 186-dr 2=oo 0=rp 42=rx in 51.0ms 9.7mbps 4.7 19.2 3.7 0.6 0.3 0.1 0.1
973: 192.168.1.30->192.168.1.123 23346=rx 186-dr 2=oo 0=rp 36=rx in 50.7ms 6.0mbps 4.7 19.2 3.7 0.6 0.3 0.1 0.1
974: 192.168.1.30->192.168.1.123 23378=rx 188-dr 2=oo 0=rp 32=rx in 51.2ms 7.4mbps 4.7 19.2 3.7 0.6 0.3 0.1 0.1
975: 192.168.1.30->192.168.1.123 23414=rx 188-dr 2=oo 0=rp 3=rx in 59.9ms 7.1mbps 4.7 19.2 3.7 0.6 0.3 0.1 0.1
976: 192.168.1.30->192.168.1.123 23417=rx 190-dr 2=oo 0=rp 3=rx in 114.5ms 0.3mbps 4.7 19.2 3.7 0.6 0.3 0.1 0.1
977: 192.168.1.30->192.168.1.123 23421=rx 190-dr 2=oo 0=rp 4=rx in 60.8ms 0.8mbps 4.7 19.2 3.7 0.6 0.3 0.1 0.1
978: 192.168.1.30->192.168.1.123 23425=rx 190-dr 2=oo 0=rp 4=rx in 60.2ms 0.8mbps 4.7 19.2 3.7 0.6 0.3 0.1 0.1
979: 192.168.1.30->192.168.1.123 23438=rx 190-dr 2=oo 0=rp 13=rx in 55.3ms 2.8mbps 4.7 19.2 3.7 0.6 0.3 0.1 0.1
980: 192.168.1.30->192.168.1.123 23439=rx 190-dr 2=oo 0=rp 1=rx in 94.9ms 0.1mbps 4.7 19.2 3.7 0.6 0.3 0.1 0.1
981: 192.168.1.30->192.168.1.123 23450=rx 190-dr 2=oo 0=rp 37=rx in 51.1ms 0.5mbps 4.7 19.2 3.7 0.6 0.3 0.1 0.1
982: 192.168.1.30->192.168.1.123 23499=rx 190-dr 2=oo 0=rp 23=rx in 131.6ms 2.1mbps 4.7 19.2 3.7 0.6 0.3 0.1 0.1
983: 192.168.1.30->192.168.1.123 23550=rx 190-dr 2=oo 0=rp 59=rx in 50.8ms 13.7mbps 4.7 19.2 3.7 0.6 0.3 0.1 0.1
984: 192.168.1.30->192.168.1.123 23585=rx 190-dr 2=oo 0=rp 27=rx in 54.8ms 5.8mbps 4.7 19.2 3.7 0.6 0.3 0.1 0.1
985: 192.168.1.30->192.168.1.123 23617=rx 190-dr 2=oo 0=rp 32=rx in 51.7ms 7.3mbps 4.7 19.2 3.7 0.6 0.3 0.1 0.1
986: 192.168.1.30->192.168.1.123 23644=rx 190-dr 2=oo 0=rp 27=rx in 56.2ms 5.7mbps 4.7 19.2 3.7 0.6 0.3 0.1 0.1
987: 192.168.1.30->192.168.1.123 23676=rx 190-dr 2=oo 0=rp 32=rx in 54.7ms 6.9mbps 4.7 19.2 3.7 0.6 0.3 0.1 0.1
988: 192.168.1.30->192.168.1.123 23677=rx 190-dr 2=oo 0=rp 1=rx in 81.5ms 0.1mbps 4.7 19.2 3.7 0.5 0.3 0.1 0.1
989: 192.168.1.30->192.168.1.123 23737=rx 190-dr 2=oo 0=rp 60=rx in 52.8ms 13.4mbps 4.7 19.2 3.7 0.5 0.3 0.1 0.1
990: 192.168.1.30->192.168.1.123 23750=rx 190-dr 2=oo 0=rp 21=rx in 52.8ms 4.7mbps 4.7 19.2 3.8 0.5 0.3 0.1 0.1
991: 192.168.1.30->192.168.1.123 23761=rx 190-dr 2=oo 0=rp 3=rx in 96.2ms 0.4mbps 4.7 19.2 3.7 0.5 0.3 0.1 0.1
992: 192.168.1.30->192.168.1.123 23788=rx 190-dr 2=oo 0=rp 27=rx in 50.9ms 6.3mbps 4.7 19.2 3.8 0.5 0.3 0.1 0.1
993: 192.168.1.30->192.168.1.123 23800=rx 191-dr 2=oo 0=rp 20=rx in 129.2ms 1.8mbps 4.7 19.2 3.7 0.5 0.3 0.1 0.1
994: 192.168.1.30->192.168.1.123 23844=rx 191-dr 2=oo 0=rp 36=rx in 79.8ms 5.3mbps 4.7 19.2 3.8 0.5 0.3 0.1 0.1
995: 192.168.1.30->192.168.1.123 23850=rx 191-dr 2=oo 0=rp 14=rx in 124.5ms 1.3mbps 4.7 19.2 3.7 0.5 0.3 0.1 0.1
996: 192.168.1.30->192.168.1.123 23912=rx 191-dr 2=oo 0=rp 5=rx in 51.2ms 12.4mbps 4.7 19.2 3.8 0.5 0.3 0.1 0.1
997: 192.168.1.30->192.168.1.123 23933=rx 191-dr 2=oo 0=rp 21=rx in 52.5ms 4.7mbps 4.7 19.2 3.8 0.5 0.3 0.1 0.1
998: 192.168.1.30->192.168.1.123 23934=rx 191-dr 2=oo 0=rp 1=rx in 94.5ms 0.1mbps 4.7 19.2 3.8 0.5 0.3 0.1 0.1
999: 192.168.1.30->192.168.1.123 23976=rx 191-dr 2=oo 0=rp 33=rx in 50.7ms 7.7mbps 4.7 19.2 3.8 0.5 0.3 0.1 0.1
# src dst rx dr oo rp rx in b_time b_thruput avg 0% 50% 90% 95% 99% 99.9%
Test apparently complete
count--
complete
C:\Documents and Settings\Administrator>
```

TCP: 4.1Mbps

```
Odrachtprompt
965: 192.168.1.30->192.168.1.123 21740=rx 0=dr 0=oo 0=rp 5=rx in 123.6ms 0.5mbps 4.1 18.5 4.2 0.6 0.4 0.1 0.0
966: 192.168.1.30->192.168.1.123 21771=rx 0=dr 0=oo 0=rp 37=rx in 55.1ms 7.9mbps 4.1 18.5 4.2 0.6 0.4 0.1 0.0
967: 192.168.1.30->192.168.1.123 21796=rx 0=dr 0=oo 0=rp 19=rx in 51.7ms 4.3mbps 4.1 18.5 4.2 0.6 0.4 0.1 0.0
968: 192.168.1.30->192.168.1.123 21821=rx 0=dr 0=oo 0=rp 25=rx in 56.1ms 5.3mbps 4.1 18.5 4.2 0.6 0.4 0.1 0.0
969: 192.168.1.30->192.168.1.123 21852=rx 0=dr 0=oo 0=rp 31=rx in 51.8ms 7.1mbps 4.1 18.5 4.2 0.6 0.4 0.1 0.0
970: 192.168.1.30->192.168.1.123 21872=rx 0=dr 0=oo 0=rp 20=rx in 132.5ms 1.0mbps 4.1 18.5 4.2 0.6 0.4 0.1 0.0
971: 192.168.1.30->192.168.1.123 21905=rx 0=dr 0=oo 0=rp 33=rx in 51.8ms 7.5mbps 4.1 18.5 4.2 0.6 0.4 0.1 0.0
972: 192.168.1.30->192.168.1.123 21927=rx 0=dr 0=oo 0=rp 22=rx in 133.6ms 1.7mbps 4.1 18.5 4.2 0.6 0.4 0.1 0.0
973: 192.168.1.30->192.168.1.123 21930=rx 0=dr 0=oo 0=rp 11=rx in 51.4ms 2.5mbps 4.1 18.5 4.2 0.6 0.4 0.1 0.0
974: 192.168.1.30->192.168.1.123 21961=rx 0=dr 0=oo 0=rp 23=rx in 51.1ms 5.3mbps 4.1 18.5 4.2 0.6 0.4 0.1 0.0
975: 192.168.1.30->192.168.1.123 21991=rx 0=dr 0=oo 0=rp 30=rx in 50.3ms 7.0mbps 4.1 18.5 4.2 0.6 0.4 0.1 0.0
976: 192.168.1.30->192.168.1.123 22006=rx 0=dr 0=oo 0=rp 15=rx in 146.2ms 1.2mbps 4.1 18.5 4.2 0.6 0.4 0.1 0.0
977: 192.168.1.30->192.168.1.123 22046=rx 0=dr 0=oo 0=rp 40=rx in 54.8ms 8.6mbps 4.1 18.5 4.2 0.6 0.4 0.1 0.0
978: 192.168.1.30->192.168.1.123 22063=rx 0=dr 0=oo 0=rp 17=rx in 106.8ms 1.9mbps 4.1 18.5 4.2 0.6 0.4 0.1 0.0
979: 192.168.1.30->192.168.1.123 22091=rx 0=dr 0=oo 0=rp 28=rx in 54.6ms 6.0mbps 4.1 18.5 4.2 0.6 0.4 0.1 0.0
980: 192.168.1.30->192.168.1.123 22116=rx 0=dr 0=oo 0=rp 25=rx in 52.7ms 3.2mbps 4.1 18.5 4.2 0.6 0.4 0.1 0.0
981: 192.168.1.30->192.168.1.123 22135=rx 0=dr 0=oo 0=rp 20=rx in 53.1ms 4.4mbps 4.1 18.5 4.2 0.6 0.4 0.1 0.0
982: 192.168.1.30->192.168.1.123 22176=rx 0=dr 0=oo 0=rp 40=rx in 50.3ms 9.4mbps 4.1 18.5 4.2 0.6 0.4 0.1 0.0
983: 192.168.1.30->192.168.1.123 22200=rx 0=dr 0=oo 0=rp 24=rx in 137.6ms 2.1mbps 4.1 18.5 4.2 0.6 0.4 0.1 0.0
984: 192.168.1.30->192.168.1.123 22225=rx 0=dr 0=oo 0=rp 25=rx in 51.4ms 5.7mbps 4.1 18.5 4.2 0.6 0.4 0.1 0.0
985: 192.168.1.30->192.168.1.123 22230=rx 0=dr 0=oo 0=rp 13=rx in 133.7ms 1.1mbps 4.1 18.5 4.2 0.6 0.4 0.1 0.0
986: 192.168.1.30->192.168.1.123 22271=rx 0=dr 0=oo 0=rp 33=rx in 63.8ms 6.1mbps 4.1 18.5 4.2 0.6 0.4 0.1 0.0
987: 192.168.1.30->192.168.1.123 22293=rx 0=dr 0=oo 0=rp 22=rx in 50.8ms 5.1mbps 4.1 18.5 4.2 0.6 0.4 0.1 0.0
988: 192.168.1.30->192.168.1.123 22303=rx 0=dr 0=oo 0=rp 10=rx in 132.2ms 0.9mbps 4.1 18.5 4.2 0.6 0.4 0.1 0.0
989: 192.168.1.30->192.168.1.123 22333=rx 0=dr 0=oo 0=rp 30=rx in 50.7ms 7.0mbps 4.1 18.5 4.2 0.6 0.4 0.1 0.0
990: 192.168.1.30->192.168.1.123 22349=rx 0=dr 0=oo 0=rp 16=rx in 137.0ms 1.5mbps 4.1 18.5 4.2 0.6 0.4 0.1 0.0
991: 192.168.1.30->192.168.1.123 22366=rx 0=dr 0=oo 0=rp 17=rx in 110.5ms 1.8mbps 4.1 18.5 4.2 0.6 0.4 0.1 0.0
992: 192.168.1.30->192.168.1.123 22392=rx 0=dr 0=oo 0=rp 26=rx in 52.0ms 5.9mbps 4.1 18.5 4.2 0.6 0.4 0.1 0.0
993: 192.168.1.30->192.168.1.123 22393=rx 0=dr 0=oo 0=rp 1=rx in 51.7ms 0.2mbps 4.1 18.5 4.2 0.6 0.4 0.1 0.0
994: 192.168.1.30->192.168.1.123 22440=rx 0=dr 0=oo 0=rp 47=rx in 50.7ms 10.9mbps 4.1 18.5 4.2 0.6 0.4 0.1 0.0
995: 192.168.1.30->192.168.1.123 22451=rx 0=dr 0=oo 0=rp 11=rx in 115.2ms 1.1mbps 4.1 18.5 4.2 0.6 0.4 0.1 0.0
996: 192.168.1.30->192.168.1.123 22466=rx 0=dr 0=oo 0=rp 15=rx in 94.3ms 1.9mbps 4.1 18.5 4.2 0.6 0.4 0.1 0.0
997: 192.168.1.30->192.168.1.123 22487=rx 0=dr 0=oo 0=rp 21=rx in 62.2ms 4.0mbps 4.1 18.5 4.2 0.6 0.4 0.1 0.0
998: 192.168.1.30->192.168.1.123 22510=rx 0=dr 0=oo 0=rp 23=rx in 50.7ms 5.3mbps 4.1 18.5 4.2 0.6 0.4 0.1 0.0
999: 192.168.1.30->192.168.1.123 22517=rx 0=dr 0=oo 0=rp 7=rx in 111.1ms 0.7mbps 4.1 18.5 4.2 0.6 0.4 0.1 0.0
# src dst rx dr oo rp rx in b_time b_thruput avg 0% 50% 90% 95% 99% 99.9%
Test apparently complete
count--
complete
C:\Documents and Settings\Administrator>
```


De derde test is uitgevoerd met 1 hop extra tussen de notebooks.



UDP: 4.5 Mbps

```

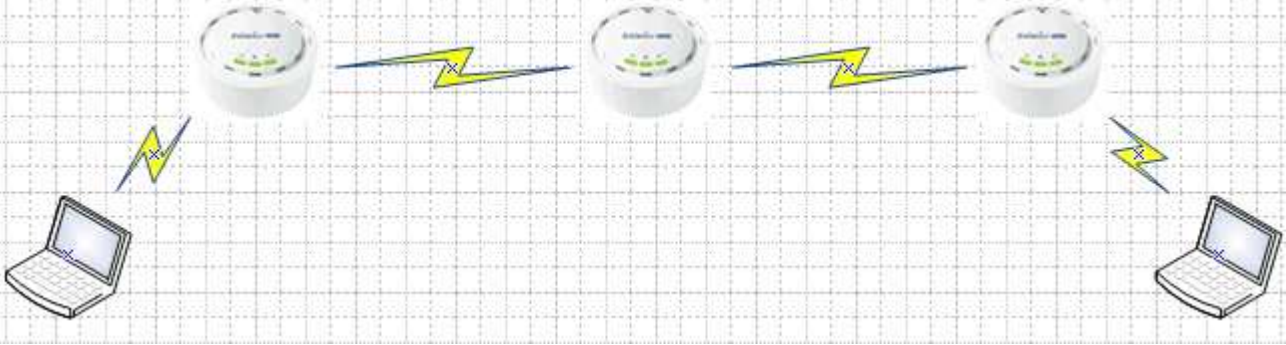
c:\Odrachtprompt
965: 192.168.1.30->192.168.1.123 21618=>rx 233-dr 2=oo 0=rp 15=>rx in 127.6ms 1.4mbps 4.4 16.2 4.1 0.5 0.2 0.1 0.1
966: 192.168.1.30->192.168.1.123 21648=>rx 233-dr 2=oo 0=rp 30=>rx in 53.0ms 6.7mbps 4.4 16.2 4.1 0.5 0.2 0.1 0.1
967: 192.168.1.30->192.168.1.123 21678=>rx 233-dr 2=oo 0=rp 30=>rx in 53.0ms 6.7mbps 4.4 16.2 4.1 0.5 0.2 0.1 0.1
968: 192.168.1.30->192.168.1.123 21683=>rx 235-dr 2=oo 0=rp 5=>rx in 104.4ms 0.6mbps 4.4 16.2 4.1 0.5 0.2 0.1 0.1
969: 192.168.1.30->192.168.1.123 21722=>rx 235-dr 2=oo 0=rp 39=>rx in 50.3ms 9.1mbps 4.4 16.2 4.1 0.5 0.2 0.1 0.1
970: 192.168.1.30->192.168.1.123 21749=>rx 236-dr 2=oo 0=rp 27=>rx in 144.3ms 2.2mbps 4.4 16.2 4.1 0.5 0.2 0.1 0.1
971: 192.168.1.30->192.168.1.123 21786=>rx 236-dr 2=oo 0=rp 37=>rx in 52.0ms 8.4mbps 4.4 16.2 4.1 0.5 0.2 0.1 0.1
972: 192.168.1.30->192.168.1.123 21812=>rx 236-dr 2=oo 0=rp 26=>rx in 122.2ms 2.5mbps 4.4 16.2 4.1 0.5 0.2 0.1 0.1
973: 192.168.1.30->192.168.1.123 21865=>rx 236-dr 2=oo 0=rp 53=>rx in 53.1ms 11.8mbps 4.5 16.2 4.1 0.5 0.2 0.1 0.1
974: 192.168.1.30->192.168.1.123 21895=>rx 236-dr 2=oo 0=rp 30=>rx in 50.8ms 7.0mbps 4.5 16.2 4.2 0.5 0.2 0.1 0.1
975: 192.168.1.30->192.168.1.123 21932=>rx 236-dr 2=oo 0=rp 37=>rx in 53.1ms 8.2mbps 4.5 16.2 4.2 0.5 0.2 0.1 0.1
976: 192.168.1.30->192.168.1.123 21961=>rx 237-dr 2=oo 0=rp 29=>rx in 97.5ms 3.5mbps 4.5 16.2 4.2 0.5 0.2 0.1 0.1
977: 192.168.1.30->192.168.1.123 22001=>rx 237-dr 2=oo 0=rp 40=>rx in 52.1ms 9.0mbps 4.5 16.2 4.2 0.5 0.2 0.1 0.1
978: 192.168.1.30->192.168.1.123 22037=>rx 237-dr 2=oo 0=rp 36=>rx in 50.1ms 8.5mbps 4.5 16.2 4.2 0.5 0.2 0.1 0.1
979: 192.168.1.30->192.168.1.123 22054=>rx 237-dr 2=oo 0=rp 17=>rx in 120.8ms 1.7mbps 4.5 16.2 4.2 0.5 0.2 0.1 0.1
980: 192.168.1.30->192.168.1.123 22097=>rx 238-dr 2=oo 0=rp 83=>rx in 50.4ms 10.0mbps 4.5 16.2 4.2 0.5 0.2 0.1 0.1
981: 192.168.1.30->192.168.1.123 22134=>rx 238-dr 2=oo 0=rp 37=>rx in 146.9ms 3.0mbps 4.5 16.2 4.2 0.5 0.2 0.1 0.1
982: 192.168.1.30->192.168.1.123 22184=>rx 238-dr 2=oo 0=rp 50=>rx in 62.1ms 9.5mbps 4.5 16.2 4.2 0.5 0.2 0.1 0.1
983: 192.168.1.30->192.168.1.123 22203=>rx 238-dr 2=oo 0=rp 19=>rx in 127.2ms 1.8mbps 4.5 16.2 4.2 0.5 0.2 0.1 0.1
984: 192.168.1.30->192.168.1.123 22242=>rx 238-dr 2=oo 0=rp 39=>rx in 51.6ms 8.9mbps 4.5 16.2 4.2 0.5 0.2 0.1 0.1
985: 192.168.1.30->192.168.1.123 22267=>rx 239-dr 2=oo 0=rp 25=>rx in 138.7ms 2.1mbps 4.5 16.2 4.2 0.5 0.2 0.1 0.1
986: 192.168.1.30->192.168.1.123 22318=>rx 239-dr 2=oo 0=rp 47=>rx in 54.4ms 10.2mbps 4.5 16.2 4.2 0.5 0.2 0.1 0.1
987: 192.168.1.30->192.168.1.123 22339=>rx 239-dr 2=oo 0=rp 25=>rx in 114.2ms 2.6mbps 4.5 16.2 4.2 0.5 0.2 0.1 0.1
988: 192.168.1.30->192.168.1.123 22379=>rx 239-dr 2=oo 0=rp 40=>rx in 59.2ms 8.0mbps 4.5 16.2 4.2 0.5 0.2 0.1 0.1
989: 192.168.1.30->192.168.1.123 22398=>rx 239-dr 2=oo 0=rp 19=>rx in 91.1ms 2.5mbps 4.5 16.2 4.2 0.5 0.2 0.1 0.1
990: 192.168.1.30->192.168.1.123 22460=>rx 239-dr 2=oo 0=rp 62=>rx in 50.7ms 14.8mbps 4.5 16.2 4.2 0.5 0.2 0.1 0.1
991: 192.168.1.30->192.168.1.123 22498=>rx 239-dr 2=oo 0=rp 38=>rx in 50.2ms 8.9mbps 4.5 16.2 4.2 0.5 0.2 0.1 0.1
992: 192.168.1.30->192.168.1.123 22543=>rx 239-dr 2=oo 0=rp 45=>rx in 51.2ms 10.4mbps 4.5 16.2 4.2 0.5 0.2 0.1 0.1
993: 192.168.1.30->192.168.1.123 22568=>rx 239-dr 2=oo 0=rp 25=>rx in 51.3ms 5.7mbps 4.5 16.2 4.2 0.5 0.2 0.1 0.1
994: 192.168.1.30->192.168.1.123 22608=>rx 239-dr 2=oo 0=rp 40=>rx in 50.2ms 9.4mbps 4.5 16.2 4.2 0.5 0.2 0.1 0.1
995: 192.168.1.30->192.168.1.123 22637=>rx 239-dr 2=oo 0=rp 25=>rx in 51.4ms 6.7mbps 4.5 16.2 4.2 0.5 0.2 0.1 0.1
996: 192.168.1.30->192.168.1.123 22651=>rx 239-dr 2=oo 0=rp 18=>rx in 63.0ms 3.4mbps 4.5 16.2 4.2 0.5 0.2 0.1 0.1
997: 192.168.1.30->192.168.1.123 22692=>rx 239-dr 2=oo 0=rp 41=>rx in 50.9ms 9.5mbps 4.5 16.2 4.2 0.5 0.2 0.1 0.1
998: 192.168.1.30->192.168.1.123 22721=>rx 239-dr 2=oo 0=rp 29=>rx in 54.2ms 6.3mbps 4.5 16.2 4.2 0.5 0.2 0.1 0.1
999: 192.168.1.30->192.168.1.123 22734=>rx 241-dr 2=oo 0=rp 13=>rx in 133.7ms 1.1mbps 4.5 16.2 4.2 0.5 0.2 0.1 0.1
#; src dst rx dr oo rp rx in b_time b_thruput avg
Test apparently complete
count--
complete
C:\Documents and Settings\Administrator>
  
```

TCP: 3.4Mbps

```

c:\Odrachtprompt
965: 192.168.1.30->192.168.1.123 18152=>rx 0=dr 0=oo 0=rp 18=>rx in 417.8ms 0.5mbps 3.5 15.1 3.7 0.5 0.3 0.1 0.0
966: 192.168.1.30->192.168.1.123 18170=>rx 0=dr 0=oo 0=rp 26=>rx in 52.3ms 5.9mbps 3.5 15.1 3.7 0.5 0.3 0.1 0.0
967: 192.168.1.30->192.168.1.123 18193=>rx 0=dr 0=oo 0=rp 15=>rx in 64.1ms 2.8mbps 3.5 15.1 3.7 0.5 0.3 0.1 0.0
968: 192.168.1.30->192.168.1.123 18209=>rx 0=dr 0=oo 0=rp 16=>rx in 130.0ms 1.4mbps 3.5 15.1 3.7 0.5 0.3 0.1 0.0
969: 192.168.1.30->192.168.1.123 18231=>rx 0=dr 0=oo 0=rp 22=>rx in 64.4ms 4.0mbps 3.5 15.1 3.7 0.5 0.3 0.1 0.0
970: 192.168.1.30->192.168.1.123 18242=>rx 0=dr 0=oo 0=rp 11=>rx in 201.1ms 0.6mbps 3.5 15.1 3.7 0.5 0.3 0.1 0.0
971: 192.168.1.30->192.168.1.123 18266=>rx 0=dr 0=oo 0=rp 24=>rx in 144.7ms 2.0mbps 3.5 15.1 3.7 0.5 0.3 0.1 0.0
972: 192.168.1.30->192.168.1.123 18282=>rx 0=dr 0=oo 0=rp 16=>rx in 56.3ms 3.3mbps 3.5 15.1 3.7 0.5 0.3 0.1 0.0
973: 192.168.1.30->192.168.1.123 18297=>rx 0=dr 0=oo 0=rp 15=>rx in 134.0ms 1.3mbps 3.5 15.1 3.7 0.5 0.3 0.1 0.0
974: 192.168.1.30->192.168.1.123 18309=>rx 0=dr 0=oo 0=rp 12=>rx in 68.0ms 2.1mbps 3.5 15.1 3.7 0.5 0.3 0.1 0.0
975: 192.168.1.30->192.168.1.123 18323=>rx 0=dr 0=oo 0=rp 17=>rx in 56.4ms 3.5mbps 3.5 15.1 3.7 0.5 0.3 0.1 0.0
976: 192.168.1.30->192.168.1.123 18355=>rx 0=dr 0=oo 0=rp 29=>rx in 50.3ms 6.8mbps 3.5 15.1 3.7 0.5 0.3 0.1 0.0
977: 192.168.1.30->192.168.1.123 18373=>rx 0=dr 0=oo 0=rp 18=>rx in 55.1ms 3.8mbps 3.5 15.1 3.7 0.5 0.3 0.1 0.0
978: 192.168.1.30->192.168.1.123 18374=>rx 0=dr 0=oo 0=rp 1=>rx in 100.4ms 0.1mbps 3.5 15.1 3.7 0.5 0.2 0.1 0.0
979: 192.168.1.30->192.168.1.123 18379=>rx 0=dr 0=oo 0=rp 3=>rx in 59.4ms 0.6mbps 3.5 15.1 3.7 0.5 0.3 0.1 0.0
980: 192.168.1.30->192.168.1.123 18394=>rx 0=dr 0=oo 0=rp 17=>rx in 56.4ms 3.5mbps 3.5 15.1 3.7 0.5 0.3 0.1 0.0
981: 192.168.1.30->192.168.1.123 18409=>rx 0=dr 0=oo 0=rp 15=>rx in 59.1ms 3.0mbps 3.5 15.1 3.7 0.5 0.3 0.1 0.0
982: 192.168.1.30->192.168.1.123 18416=>rx 0=dr 0=oo 0=rp 7=>rx in 109.8ms 0.8mbps 3.5 15.1 3.7 0.5 0.3 0.1 0.0
983: 192.168.1.30->192.168.1.123 18436=>rx 0=dr 0=oo 0=rp 20=>rx in 55.0ms 4.3mbps 3.5 15.1 3.7 0.5 0.3 0.1 0.0
984: 192.168.1.30->192.168.1.123 18440=>rx 0=dr 0=oo 0=rp 4=>rx in 158.9ms 0.3mbps 3.5 15.1 3.7 0.5 0.3 0.1 0.0
985: 192.168.1.30->192.168.1.123 18468=>rx 0=dr 0=oo 0=rp 28=>rx in 120.0ms 2.7mbps 3.5 15.1 3.7 0.5 0.3 0.1 0.0
986: 192.168.1.30->192.168.1.123 18483=>rx 0=dr 0=oo 0=rp 15=>rx in 59.6ms 3.0mbps 3.5 15.1 3.7 0.5 0.3 0.1 0.0
987: 192.168.1.30->192.168.1.123 18490=>rx 0=dr 0=oo 0=rp 7=>rx in 93.2ms 0.9mbps 3.5 15.1 3.7 0.5 0.3 0.1 0.0
988: 192.168.1.30->192.168.1.123 18501=>rx 0=dr 0=oo 0=rp 17=>rx in 51.4ms 3.7mbps 3.5 15.1 3.7 0.5 0.3 0.1 0.0
989: 192.168.1.30->192.168.1.123 18530=>rx 0=dr 0=oo 0=rp 23=>rx in 56.5ms 4.8mbps 3.5 15.1 3.7 0.5 0.3 0.1 0.0
990: 192.168.1.30->192.168.1.123 18546=>rx 0=dr 0=oo 0=rp 16=>rx in 141.0ms 1.3mbps 3.5 15.1 3.7 0.5 0.3 0.1 0.0
991: 192.168.1.30->192.168.1.123 18556=>rx 0=dr 0=oo 0=rp 10=>rx in 64.6ms 1.8mbps 3.5 15.1 3.7 0.5 0.3 0.1 0.0
992: 192.168.1.30->192.168.1.123 18576=>rx 0=dr 0=oo 0=rp 20=>rx in 50.1ms 4.7mbps 3.5 15.1 3.7 0.5 0.3 0.1 0.0
993: 192.168.1.30->192.168.1.123 18599=>rx 0=dr 0=oo 0=rp 18=>rx in 139.0ms 1.5mbps 3.4 15.1 3.7 0.5 0.3 0.1 0.0
994: 192.168.1.30->192.168.1.123 18607=>rx 0=dr 0=oo 0=rp 13=>rx in 57.9ms 2.6mbps 3.4 15.1 3.7 0.5 0.3 0.1 0.0
995: 192.168.1.30->192.168.1.123 18620=>rx 0=dr 0=oo 0=rp 13=>rx in 143.4ms 1.1mbps 3.4 15.1 3.7 0.5 0.3 0.1 0.0
996: 192.168.1.30->192.168.1.123 18631=>rx 0=dr 0=oo 0=rp 11=>rx in 254.7ms 0.5mbps 3.4 15.1 3.7 0.5 0.3 0.1 0.0
997: 192.168.1.30->192.168.1.123 18643=>rx 0=dr 0=oo 0=rp 18=>rx in 50.0ms 4.2mbps 3.4 15.1 3.7 0.5 0.3 0.1 0.0
998: 192.168.1.30->192.168.1.123 18662=>rx 0=dr 0=oo 0=rp 13=>rx in 102.6ms 2.5mbps 3.4 15.1 3.7 0.5 0.3 0.1 0.0
999: 192.168.1.30->192.168.1.123 18674=>rx 0=dr 0=oo 0=rp 12=>rx in 53.0ms 2.7mbps 3.4 15.1 3.7 0.5 0.3 0.1 0.0
#; src dst rx dr oo rp rx in b_time b_thruput avg
Test apparently complete
count--
complete
C:\Documents and Settings\Administrator>
  
```

De vierde test is uitgevoerd met 2 hops tussen de notebooks



UDP: 3.7 Mbps

```

C:\Documents and Settings\Administrator>
965: 192.168.1.30->192.168.1.123 18619-rx 261-dr 6-00 0-rp 3-rx in 60.9ms 0.6mbps 3.7 13.7 3.0 0.6 0.3 0.1 0.1
966: 192.168.1.30->192.168.1.123 18622-rx 261-dr 6-00 0-rp 3-rx in 51.9ms 0.7mbps 3.7 13.7 3.0 0.6 0.3 0.1 0.1
967: 192.168.1.30->192.168.1.123 18626-rx 261-dr 6-00 0-rp 4-rx in 90.8ms 0.5mbps 3.7 13.7 3.0 0.6 0.3 0.1 0.1
968: 192.168.1.30->192.168.1.123 18634-rx 261-dr 7-00 0-rp 8-rx in 55.5ms 1.7mbps 3.6 13.7 3.0 0.6 0.3 0.1 0.1
969: 192.168.1.30->192.168.1.123 18652-rx 261-dr 7-00 0-rp 18-rx in 52.7ms 4.0mbps 3.7 13.7 3.0 0.6 0.3 0.1 0.1
970: 192.168.1.30->192.168.1.123 18672-rx 261-dr 7-00 0-rp 20-rx in 112.4ms 2.1mbps 3.6 13.7 3.0 0.6 0.3 0.1 0.1
971: 192.168.1.30->192.168.1.123 18707-rx 261-dr 7-00 0-rp 35-rx in 55.4ms 7.4mbps 3.7 13.7 3.0 0.6 0.3 0.1 0.1
972: 192.168.1.30->192.168.1.123 18736-rx 261-dr 7-00 0-rp 29-rx in 50.5ms 6.8mbps 3.7 13.7 3.0 0.6 0.3 0.1 0.1
973: 192.168.1.30->192.168.1.123 18781-rx 261-dr 7-00 0-rp 45-rx in 58.3ms 9.1mbps 3.7 13.7 3.0 0.6 0.3 0.1 0.1
974: 192.168.1.30->192.168.1.123 18801-rx 261-dr 7-00 0-rp 20-rx in 51.7ms 4.6mbps 3.7 13.7 3.0 0.6 0.3 0.1 0.1
975: 192.168.1.30->192.168.1.123 18816-rx 261-dr 7-00 0-rp 15-rx in 112.0ms 1.6mbps 3.7 13.7 3.0 0.6 0.3 0.1 0.1
976: 192.168.1.30->192.168.1.123 18839-rx 261-dr 7-00 0-rp 23-rx in 52.4ms 5.2mbps 3.7 13.7 3.0 0.6 0.3 0.1 0.1
977: 192.168.1.30->192.168.1.123 18851-rx 263-dr 7-00 0-rp 12-rx in 153.6ms 0.9mbps 3.7 13.7 3.0 0.6 0.3 0.1 0.1
978: 192.168.1.30->192.168.1.123 18880-rx 263-dr 7-00 0-rp 29-rx in 50.0ms 6.8mbps 3.7 13.7 3.0 0.6 0.3 0.1 0.1
979: 192.168.1.30->192.168.1.123 18904-rx 263-dr 7-00 0-rp 24-rx in 53.0ms 5.3mbps 3.7 13.7 3.0 0.6 0.3 0.1 0.1
980: 192.168.1.30->192.168.1.123 18924-rx 263-dr 7-00 0-rp 20-rx in 127.0ms 1.9mbps 3.7 13.7 3.0 0.6 0.3 0.1 0.1
981: 192.168.1.30->192.168.1.123 18942-rx 263-dr 7-00 0-rp 18-rx in 60.2ms 4.2mbps 3.7 13.7 3.0 0.6 0.4 0.1 0.1
982: 192.168.1.30->192.168.1.123 18955-rx 263-dr 7-00 0-rp 23-rx in 123.8ms 2.2mbps 3.7 13.7 3.0 0.6 0.4 0.1 0.1
983: 192.168.1.30->192.168.1.123 19005-rx 263-dr 7-00 0-rp 40-rx in 52.2ms 9.0mbps 3.7 13.7 3.0 0.6 0.4 0.1 0.1
984: 192.168.1.30->192.168.1.123 19069-rx 263-dr 7-00 0-rp 64-rx in 64.8ms 11.6mbps 3.7 13.7 3.0 0.6 0.4 0.1 0.1
985: 192.168.1.30->192.168.1.123 19097-rx 263-dr 7-00 0-rp 28-rx in 54.0ms 6.1mbps 3.7 13.7 3.0 0.6 0.4 0.1 0.1
986: 192.168.1.30->192.168.1.123 19099-rx 263-dr 7-00 0-rp 22-rx in 92.8ms 0.5mbps 3.7 13.7 3.0 0.6 0.3 0.1 0.1
987: 192.168.1.30->192.168.1.123 19127-rx 263-dr 8-00 0-rp 28-rx in 51.3ms 6.4mbps 3.7 13.7 3.0 0.6 0.3 0.1 0.1
988: 192.168.1.30->192.168.1.123 19147-rx 263-dr 8-00 0-rp 20-rx in 115.7ms 2.0mbps 3.7 13.7 3.0 0.6 0.3 0.1 0.1
989: 192.168.1.30->192.168.1.123 19171-rx 263-dr 8-00 0-rp 24-rx in 51.6ms 5.5mbps 3.7 13.7 3.0 0.6 0.3 0.1 0.1
990: 192.168.1.30->192.168.1.123 19192-rx 263-dr 8-00 0-rp 41-rx in 92.0ms 2.7mbps 3.7 13.7 3.0 0.6 0.3 0.1 0.1
991: 192.168.1.30->192.168.1.123 19232-rx 263-dr 8-00 0-rp 40-rx in 54.1ms 8.7mbps 3.7 13.7 3.0 0.6 0.3 0.1 0.1
992: 192.168.1.30->192.168.1.123 19249-rx 263-dr 8-00 0-rp 17-rx in 57.7ms 3.5mbps 3.7 13.7 3.0 0.6 0.3 0.1 0.1
993: 192.168.1.30->192.168.1.123 19280-rx 263-dr 8-00 0-rp 31-rx in 100.6ms 3.6mbps 3.7 13.7 3.0 0.6 0.3 0.1 0.1
994: 192.168.1.30->192.168.1.123 19328-rx 263-dr 8-00 0-rp 48-rx in 58.4ms 9.7mbps 3.7 13.7 3.0 0.6 0.3 0.1 0.1
995: 192.168.1.30->192.168.1.123 19342-rx 263-dr 8-00 0-rp 15-rx in 131.4ms 1.4mbps 3.7 13.7 3.0 0.6 0.3 0.1 0.1
996: 192.168.1.30->192.168.1.123 19363-rx 266-dr 8-00 0-rp 19-rx in 165.8ms 4.5mbps 3.7 13.7 3.0 0.6 0.3 0.1 0.1
997: 192.168.1.30->192.168.1.123 19366-rx 266-dr 8-00 0-rp 3-rx in 58.5ms 0.6mbps 3.7 13.7 3.0 0.6 0.3 0.1 0.1
998: 192.168.1.30->192.168.1.123 19376-rx 266-dr 8-00 0-rp 1-rx in 66.3ms 0.2mbps 3.7 13.7 3.0 0.6 0.3 0.1 0.1
999: 192.168.1.30->192.168.1.123 19368-rx 267-dr 8-00 0-rp 1-rx in 107.9ms 0.1mbps 3.7 13.7 3.0 0.6 0.3 0.1 0.1
##
# src dst rx dr oo rp rx in b_time b_thrup avg 0% 50% 90% 95% 99% 99.9%
Test apparently complete
count--
complete
C:\Documents and Settings\Administrator>
    
```

TCP: 2.5 Mbps

```

C:\Documents and Settings\Administrator>
965: 192.168.1.30->192.168.1.123 13934-rx 0-dr 0-00 0-rp 10-rx in 191.7ms 0.6mbps 2.5 10.0 2.7 0.4 0.3 0.1 0.0
966: 192.168.1.30->192.168.1.123 13954-rx 0-dr 0-00 0-rp 20-rx in 52.9ms 4.5mbps 2.5 10.0 2.7 0.4 0.3 0.1 0.0
967: 192.168.1.30->192.168.1.123 13969-rx 0-dr 0-00 0-rp 15-rx in 51.8ms 3.4mbps 2.5 10.0 2.7 0.4 0.3 0.1 0.0
968: 192.168.1.30->192.168.1.123 13988-rx 0-dr 0-00 0-rp 19-rx in 51.2ms 4.4mbps 2.5 10.0 2.7 0.4 0.3 0.1 0.0
969: 192.168.1.30->192.168.1.123 14005-rx 0-dr 0-00 0-rp 17-rx in 263.5ms 0.8mbps 2.5 10.0 2.7 0.4 0.3 0.1 0.0
970: 192.168.1.30->192.168.1.123 14033-rx 0-dr 0-00 0-rp 28-rx in 138.9ms 2.4mbps 2.5 10.0 2.7 0.4 0.3 0.1 0.0
971: 192.168.1.30->192.168.1.123 14052-rx 0-dr 0-00 0-rp 19-rx in 55.3ms 4.0mbps 2.5 10.0 2.7 0.4 0.3 0.1 0.0
972: 192.168.1.30->192.168.1.123 14068-rx 0-dr 0-00 0-rp 16-rx in 125.2ms 1.5mbps 2.5 10.0 2.7 0.4 0.3 0.1 0.0
973: 192.168.1.30->192.168.1.123 14089-rx 0-dr 0-00 0-rp 21-rx in 64.9ms 3.8mbps 2.5 10.0 2.7 0.4 0.3 0.1 0.0
974: 192.168.1.30->192.168.1.123 14101-rx 0-dr 0-00 0-rp 12-rx in 150.3ms 0.9mbps 2.5 10.0 2.7 0.4 0.3 0.1 0.0
975: 192.168.1.30->192.168.1.123 14128-rx 0-dr 0-00 0-rp 27-rx in 50.2ms 6.3mbps 2.5 10.0 2.7 0.4 0.3 0.1 0.0
976: 192.168.1.30->192.168.1.123 14130-rx 0-dr 0-00 0-rp 2-rx in 90.8ms 0.3mbps 2.5 10.0 2.7 0.4 0.3 0.1 0.0
977: 192.168.1.30->192.168.1.123 14148-rx 0-dr 0-00 0-rp 18-rx in 50.1ms 4.2mbps 2.5 10.0 2.7 0.4 0.3 0.1 0.0
978: 192.168.1.30->192.168.1.123 14161-rx 0-dr 0-00 0-rp 13-rx in 54.2ms 2.8mbps 2.5 10.0 2.7 0.4 0.3 0.1 0.0
979: 192.168.1.30->192.168.1.123 14170-rx 0-dr 0-00 0-rp 9-rx in 194.8ms 0.5mbps 2.5 10.0 2.7 0.4 0.3 0.1 0.0
980: 192.168.1.30->192.168.1.123 14187-rx 0-dr 0-00 0-rp 17-rx in 54.1ms 3.7mbps 2.5 10.0 2.7 0.4 0.3 0.1 0.0
981: 192.168.1.30->192.168.1.123 14197-rx 0-dr 0-00 0-rp 10-rx in 182.4ms 0.6mbps 2.5 10.0 2.7 0.4 0.3 0.1 0.0
982: 192.168.1.30->192.168.1.123 14209-rx 0-dr 0-00 0-rp 12-rx in 120.1ms 1.2mbps 2.5 10.0 2.7 0.4 0.3 0.1 0.0
983: 192.168.1.30->192.168.1.123 14224-rx 0-dr 0-00 0-rp 15-rx in 52.3ms 3.8mbps 2.5 10.0 2.7 0.4 0.3 0.1 0.0
984: 192.168.1.30->192.168.1.123 14231-rx 0-dr 0-00 0-rp 7-rx in 138.4ms 0.6mbps 2.5 10.0 2.7 0.4 0.3 0.1 0.0
985: 192.168.1.30->192.168.1.123 14249-rx 0-dr 0-00 0-rp 18-rx in 54.7ms 3.9mbps 2.5 10.0 2.7 0.4 0.3 0.1 0.0
986: 192.168.1.30->192.168.1.123 14264-rx 0-dr 0-00 0-rp 15-rx in 52.6ms 3.4mbps 2.5 10.0 2.7 0.4 0.3 0.1 0.0
987: 192.168.1.30->192.168.1.123 14281-rx 0-dr 0-00 0-rp 17-rx in 50.9ms 3.9mbps 2.5 10.0 2.7 0.4 0.3 0.1 0.0
988: 192.168.1.30->192.168.1.123 14298-rx 0-dr 0-00 0-rp 17-rx in 133.0ms 1.5mbps 2.5 10.0 2.7 0.4 0.3 0.1 0.0
989: 192.168.1.30->192.168.1.123 14324-rx 0-dr 0-00 0-rp 26-rx in 55.4ms 5.5mbps 2.5 10.0 2.7 0.4 0.3 0.1 0.0
990: 192.168.1.30->192.168.1.123 14340-rx 0-dr 0-00 0-rp 16-rx in 261.5ms 0.7mbps 2.5 10.0 2.7 0.4 0.3 0.1 0.0
991: 192.168.1.30->192.168.1.123 14358-rx 0-dr 0-00 0-rp 18-rx in 167.2ms 1.3mbps 2.5 10.0 2.7 0.4 0.3 0.1 0.0
992: 192.168.1.30->192.168.1.123 14372-rx 0-dr 0-00 0-rp 14-rx in 51.5ms 3.2mbps 2.5 10.0 2.7 0.4 0.3 0.1 0.0
993: 192.168.1.30->192.168.1.123 14374-rx 0-dr 0-00 0-rp 2-rx in 106.8ms 0.2mbps 2.5 10.0 2.7 0.4 0.3 0.1 0.0
994: 192.168.1.30->192.168.1.123 14388-rx 0-dr 0-00 0-rp 14-rx in 50.8ms 3.2mbps 2.5 10.0 2.7 0.4 0.3 0.1 0.0
995: 192.168.1.30->192.168.1.123 14392-rx 0-dr 0-00 0-rp 4-rx in 105.2ms 0.4mbps 2.5 10.0 2.7 0.4 0.3 0.1 0.0
996: 192.168.1.30->192.168.1.123 14406-rx 0-dr 0-00 0-rp 14-rx in 89.7ms 1.8mbps 2.5 10.0 2.7 0.4 0.3 0.1 0.0
997: 192.168.1.30->192.168.1.123 14428-rx 0-dr 0-00 0-rp 22-rx in 57.4ms 4.5mbps 2.5 10.0 2.7 0.4 0.3 0.1 0.0
998: 192.168.1.30->192.168.1.123 14444-rx 0-dr 0-00 0-rp 110-rx in 110.9ms 1.7mbps 2.5 10.0 2.7 0.4 0.3 0.1 0.0
999: 192.168.1.30->192.168.1.123 14467-rx 0-dr 0-00 0-rp 23-rx in 57.4ms 4.7mbps 2.5 10.0 2.7 0.4 0.3 0.1 0.0
##
# src dst rx dr oo rp rx in b_time b_thrup avg 0% 50% 90% 95% 99% 99.9%
Test apparently complete
count--
complete
C:\Documents and Settings\Administrator>
    
```


■ Veldzicht 26
■ 3454 PW De Meern

T +31 (0)30 65 85 125
F +31 (0)30 66 20 758

■ info@alcadis.nl
■ www.alcadis.nl



Conclusie

Het MESH netwerk gedraagt zich als een WDS netwerk. Wanneer er een link verbroken wordt zien we dat de data stroom na een korte onderbreking verder loopt over een andere route in het netwerk. Tevens doordat het een single radio MESH device is zien we dat iedere hop ongeveer 50% performance verliest.

De MESH software voorziet het netwerk van monitoring. Echter settings aanpassen is hier niet mee mogelijk. De aanpassingen dienen in de webinterface gedaan te worden. De webinterface van het device is simpel en goed te overzien.